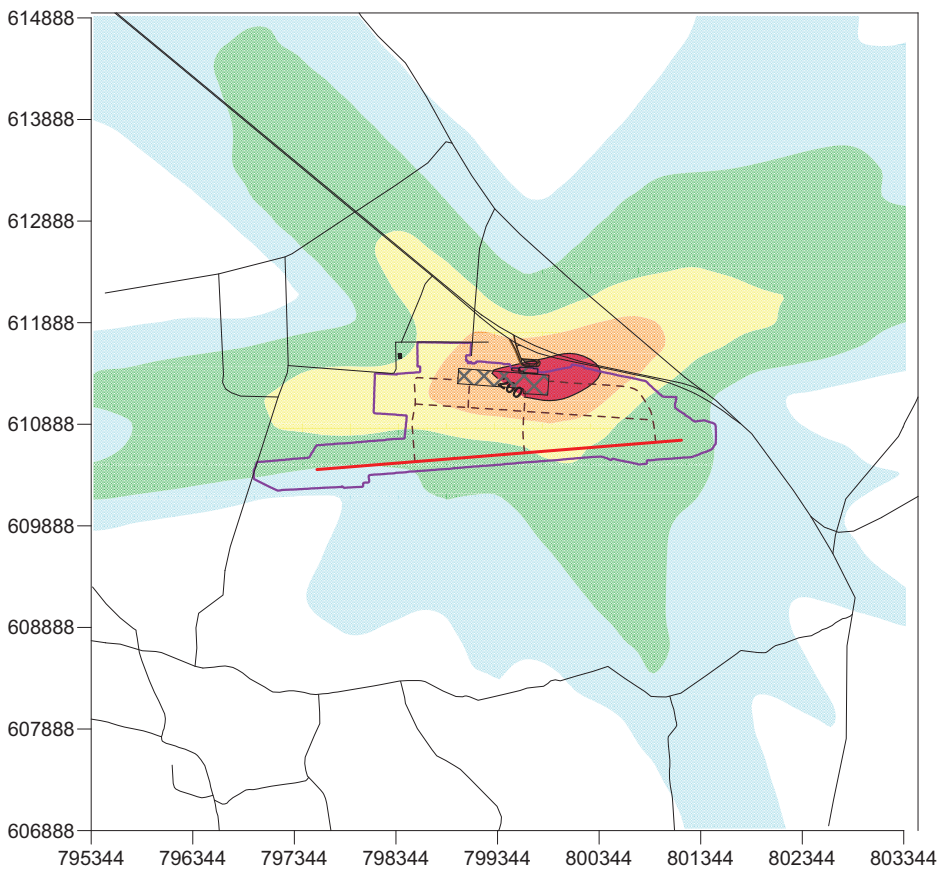


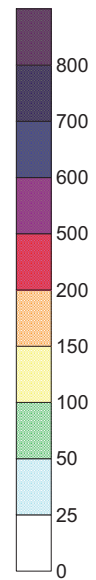
AIR POLLUTANTS DISPERSION CHISINAU Airport

Operational Phase - 2015








NO₂ - 19-th highest
maximum 1 h average concentration



Concentration
scale
($\mu\text{g}/\text{m}^3$)



Legend

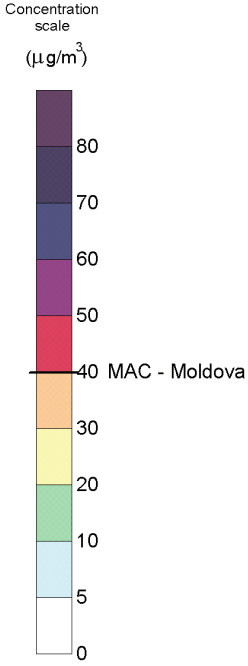
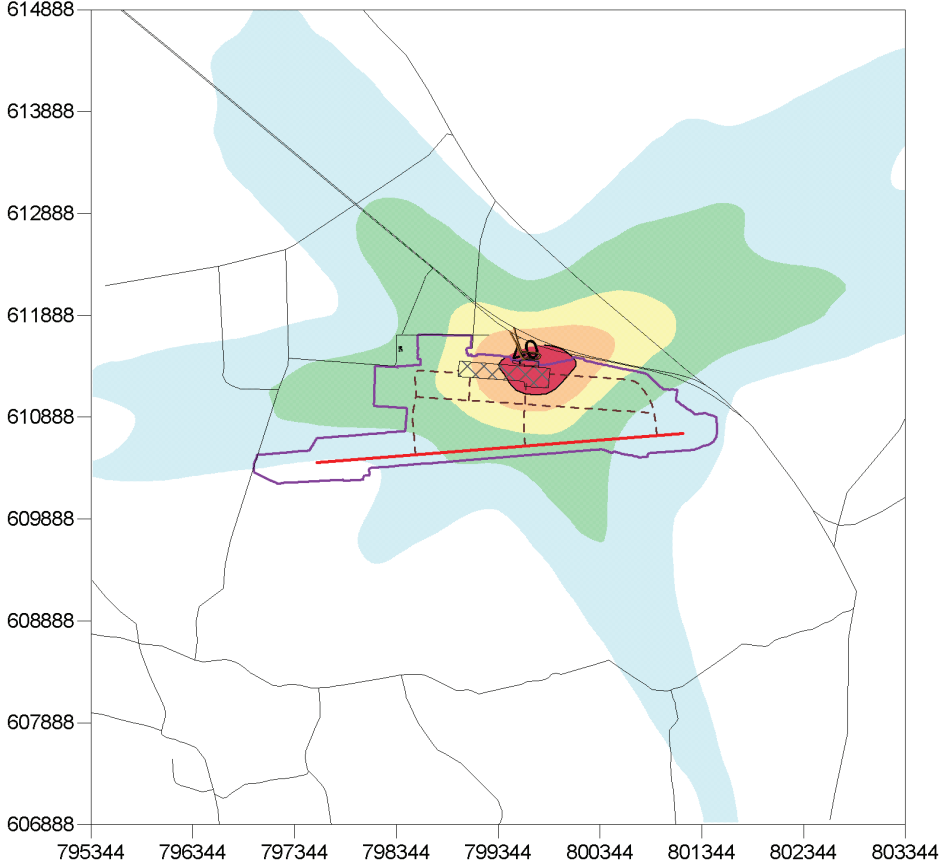
-  Airport limits
-  Runway
-  Taxiways
-  Terminal
-  Apron
-  Acces roads
-  External roads



AIR POLLUTANTS DISPERSION CHISINAU Airport

Operational Phase - 2015

NO₂ - Maximum 24h average concentration



Legend

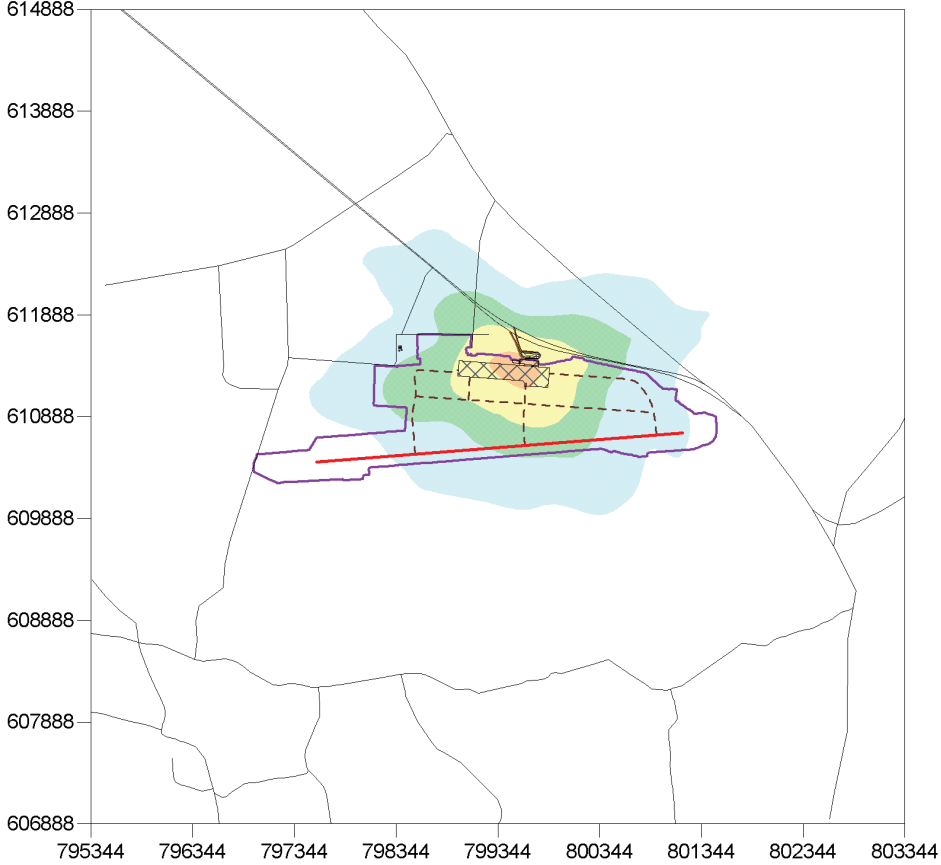
- Airport limits
- Runway
- Taxiways
- Terminal
- Apron
- Acces roads
- External roads



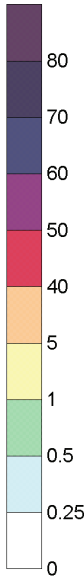
AIR POLLUTANTS DISPERSION CHISINAU Airport

Operational Phase - 2015

NO2 - Annual average concentration



Concentration scale
($\mu\text{g}/\text{m}^3$)



Legend

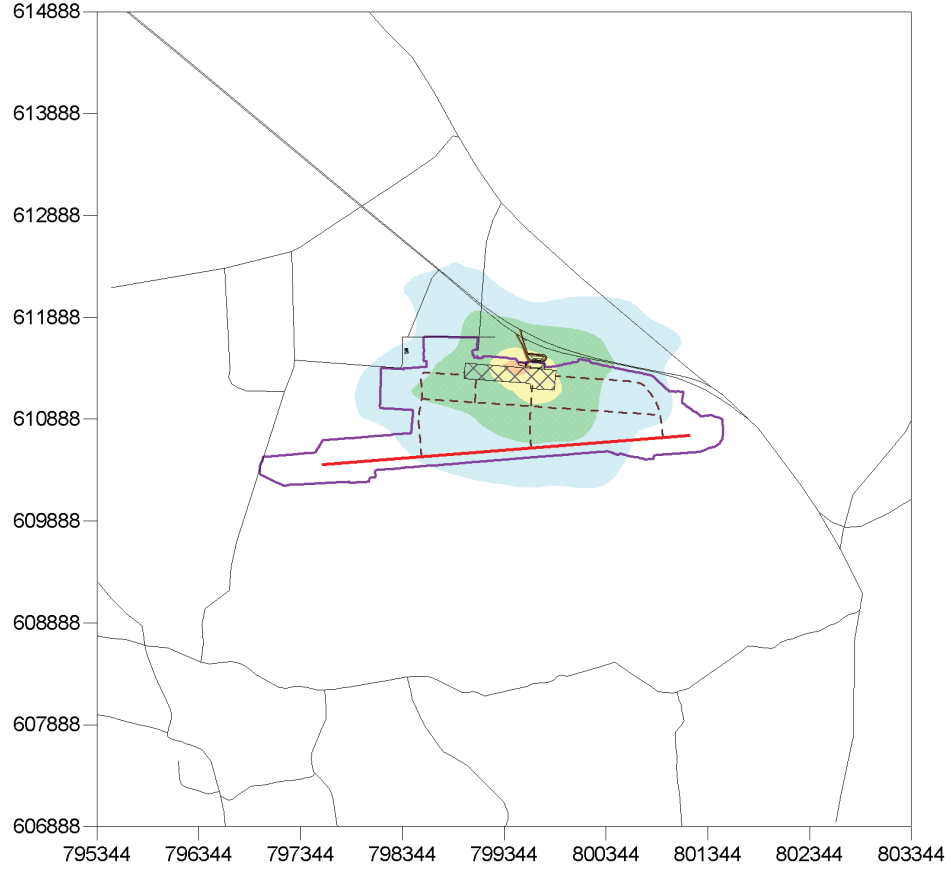
- Airport limits
- Runway
- Taxiways
- Terminal
- Apron
- Acces roads
- External roads



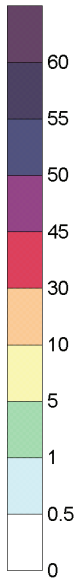
AIR POLLUTANTS DISPERSION CHISINAU Airport

Operational Phase - 2015

NOx - Annual average concentration



Concentration scale
($\mu\text{g}/\text{m}^3$)



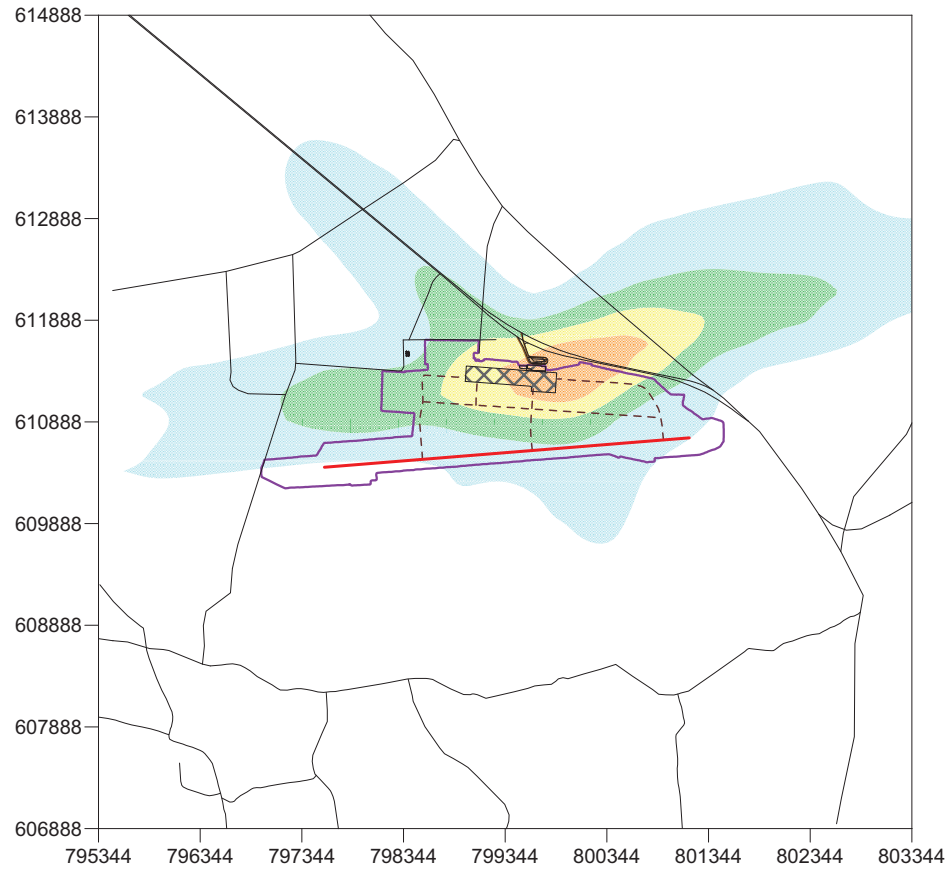
Legend

- Airport limits
- Runway
- Taxiways
- Terminal
- Apron
- Acces roads
- External roads

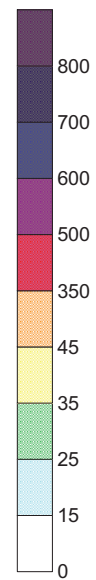
AIR POLLUTANTS DISPERSION CHISINAU Airport

Operational Phase - 2015

SO2 maximum 1 h average concentration



Concentration scale
($\mu\text{g}/\text{m}^3$)



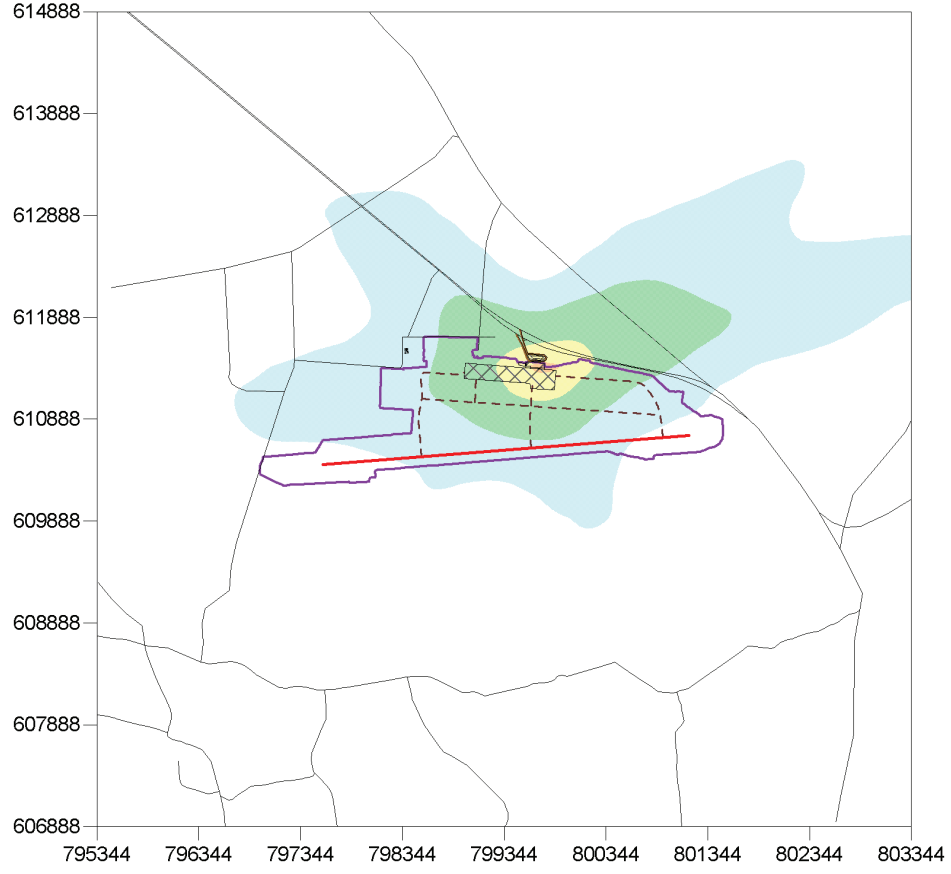
Legend

- Airport limits
- Runway
- Taxiways
- Terminal
- Apron
- Acces roads
- External roads

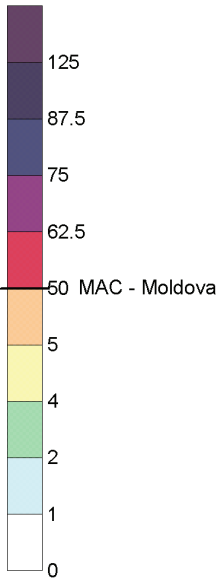
AIR POLLUTANTS DISPERSION CHISINAU Airport

Operational Phase - 2015

SO₂ - Maximum 24h average concentration



Concentration scale
($\mu\text{g}/\text{m}^3$)



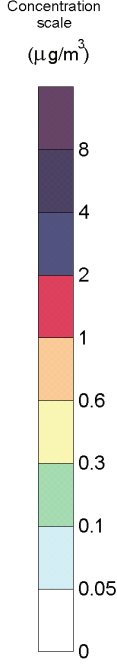
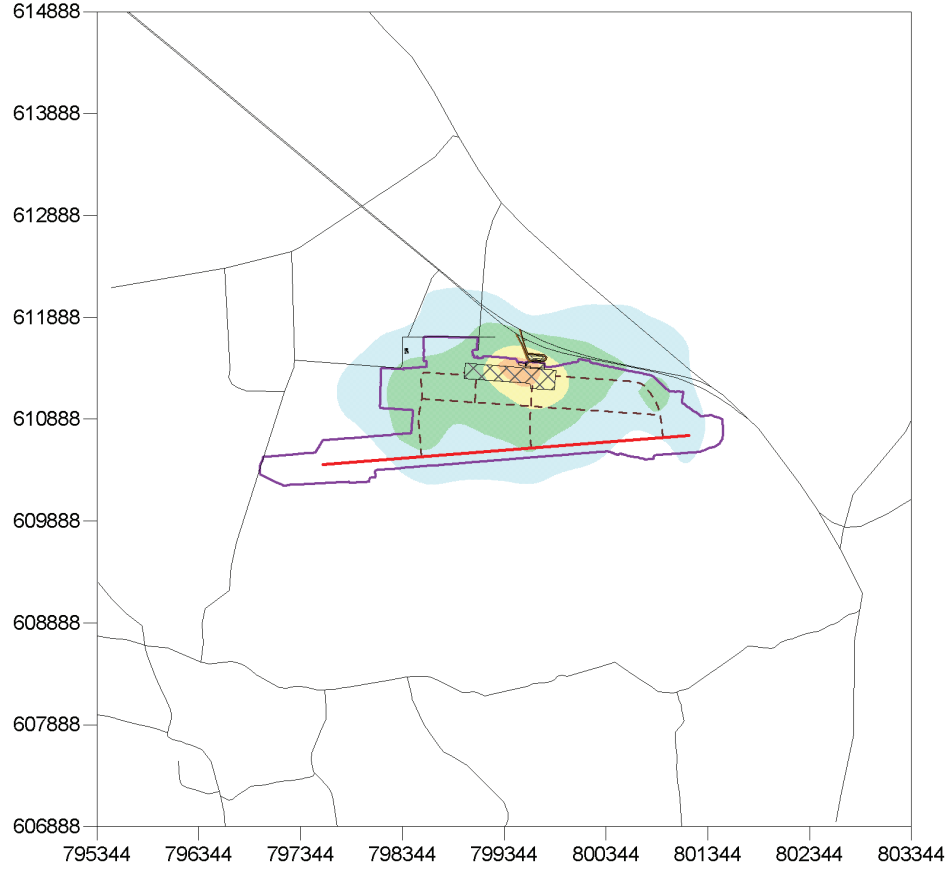
Legend

- Airport limits
- Runway
- Taxiways
- Terminal
- Apron
- Acces roads
- External roads

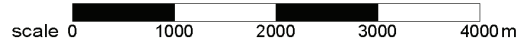
AIR POLLUTANTS DISPERSION CHISINAU Airport

Operational Phase - 2015

SO₂ - Annual average concentration



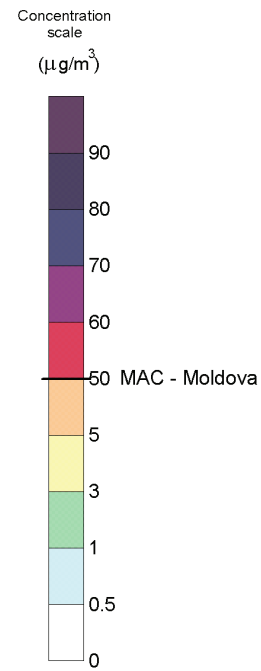
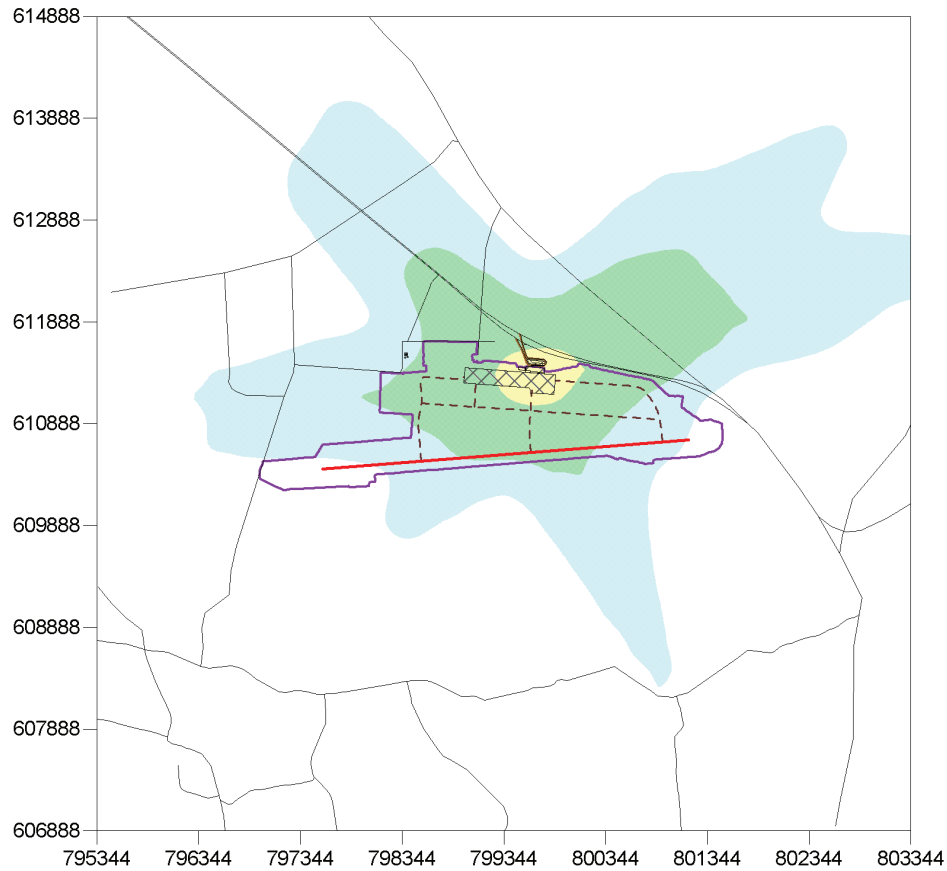
- Legend**
- Airport limits
 - Runway
 - Taxiways
 - Terminal
 - Apron
 - Acces roads
 - External roads



AIR POLLUTANTS DISPERSION CHISINAU Airport

Operational Phase - 2015

PM10 - Maximum 24h average concentration



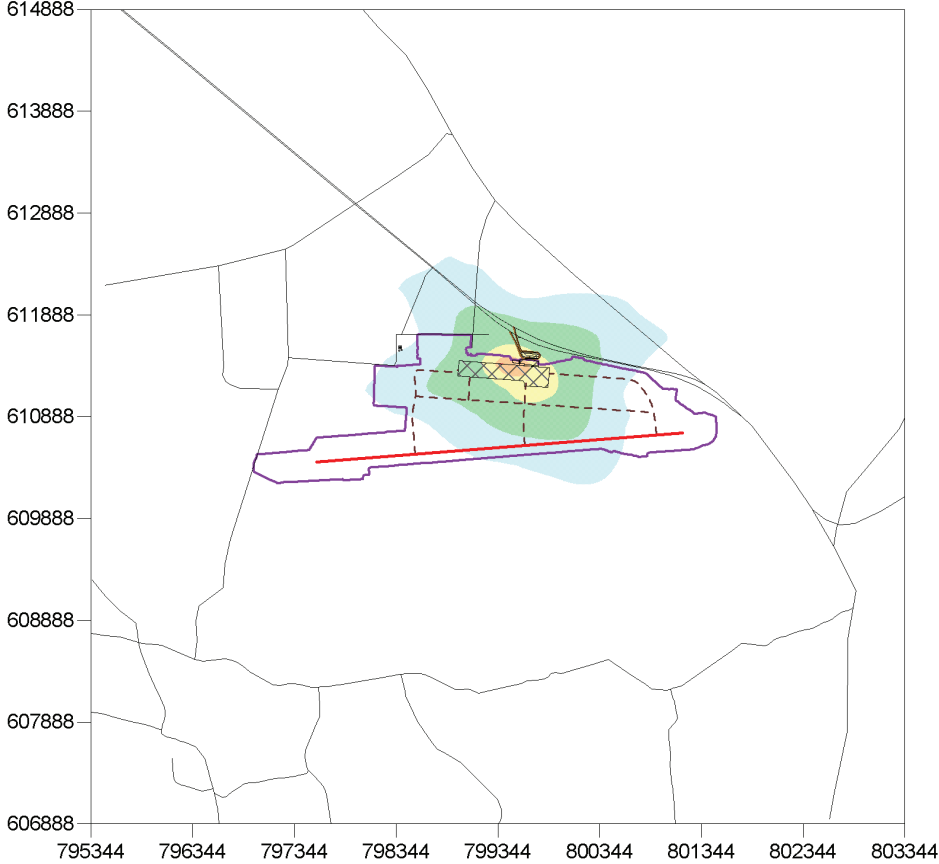
Legend

- Airport limits
- Runway
- Taxiways
- Terminal
- Apron
- Acces roads
- External roads

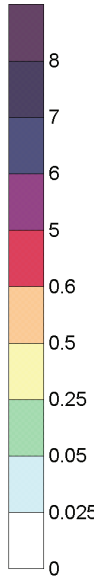
AIR POLLUTANTS DISPERSION CHISINAU Airport

Operational Phase - 2015

PM10 - Annual average concentration



Concentration scale
($\mu\text{g}/\text{m}^3$)



Legend

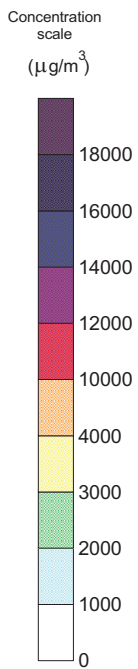
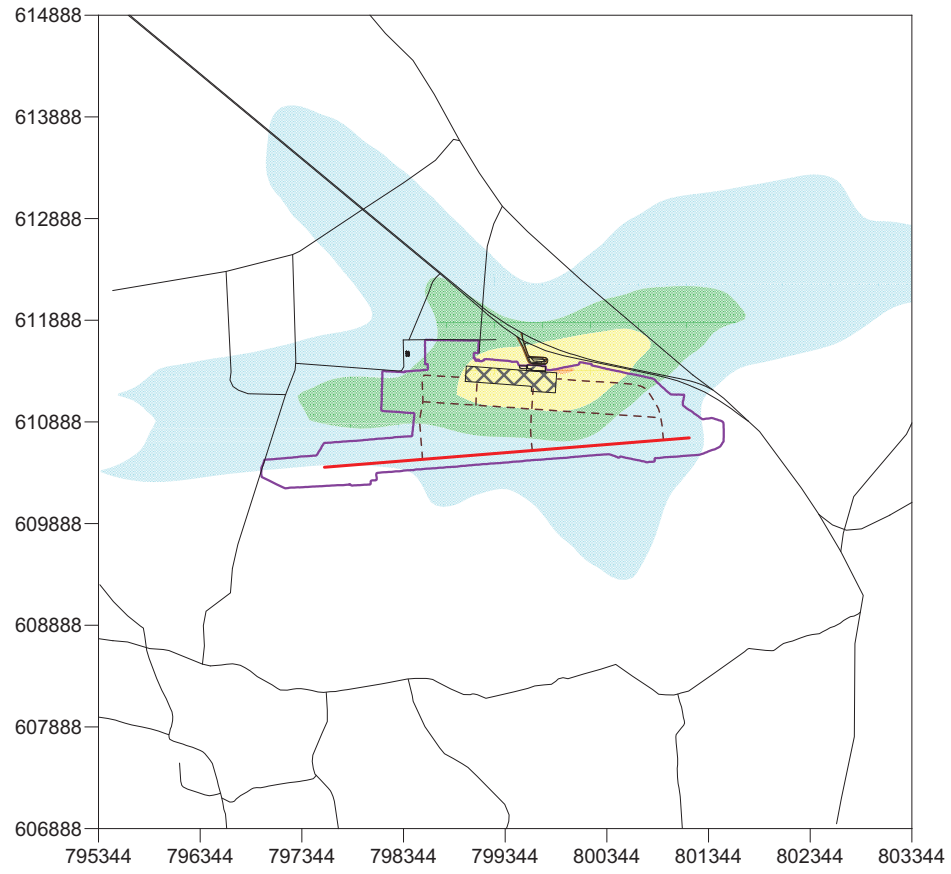
- Airport limits
- Runway
- Taxiways
- Terminal
- Apron
- Acces roads
- External roads



AIR POLLUTANTS DISPERSION CHISINAU Airport

Operational Phase - 2015

CO - Maximum 8h dynamical average concentration



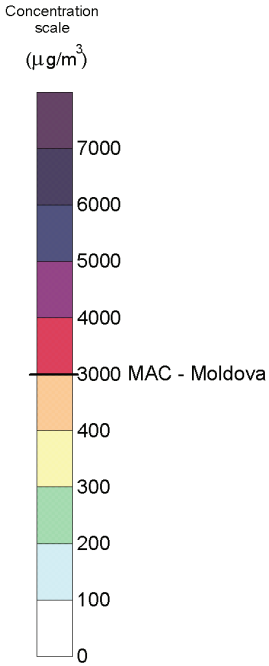
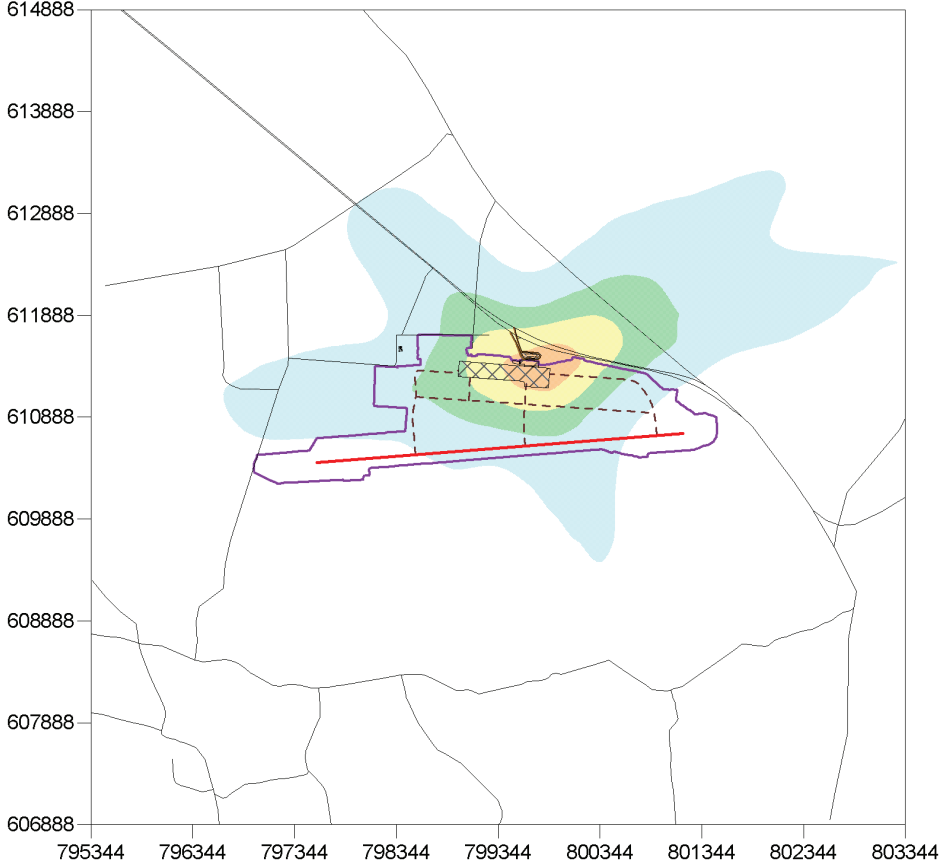
- Legend**
- Airport limits
 - Runway
 - Taxiways
 - Terminal
 - Apron
 - Acces roads
 - External roads



AIR POLLUTANTS DISPERSION CHISINAU Airport

Operational Phase - 2015

CO - Maximum 24h average concentration



Legend

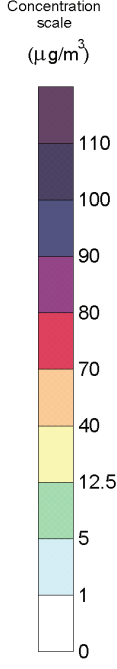
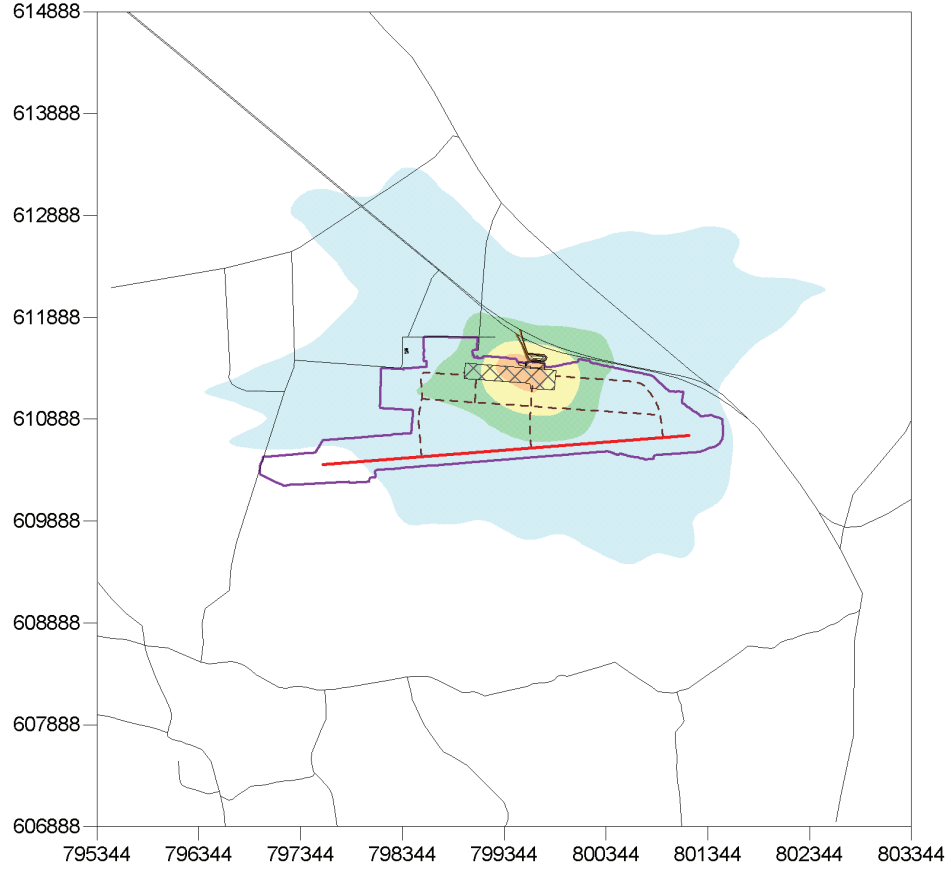
- Airport limits
- Runway
- Taxiways
- Terminal
- Apron
- Acces roads
- External roads



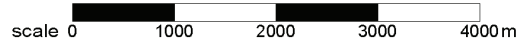
AIR POLLUTANTS DISPERSION CHISINAU Airport

Operational Phase - 2015

CO - Annual average concentration



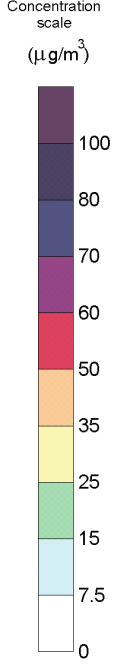
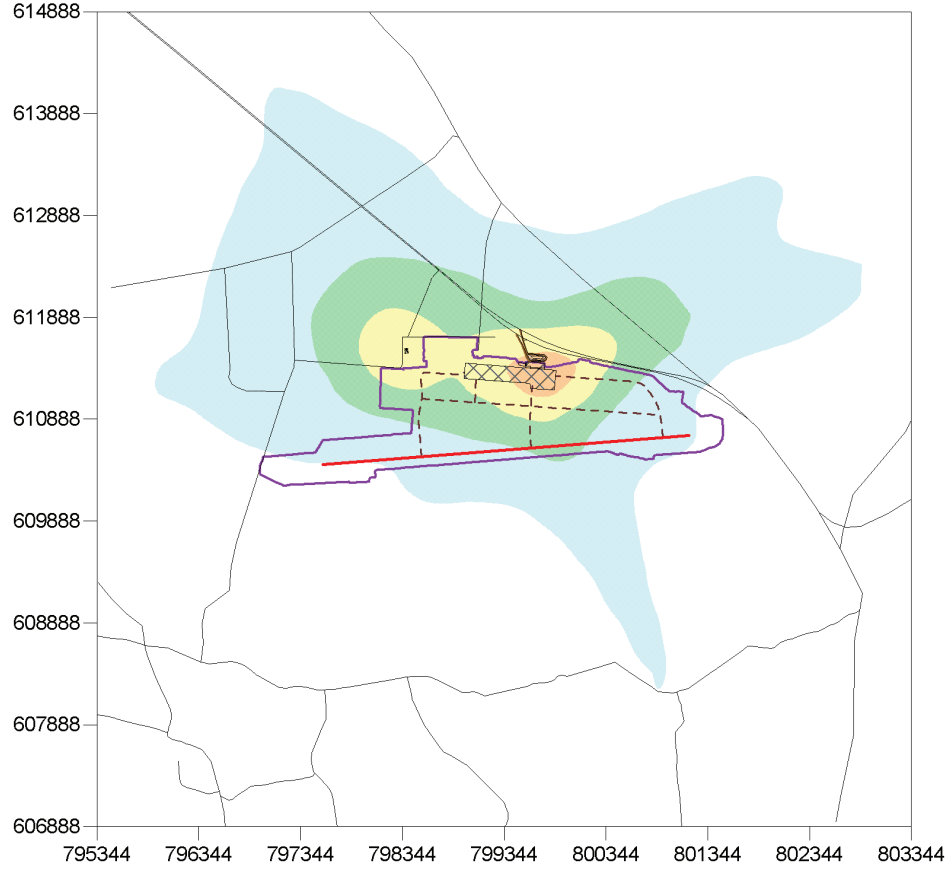
- Legend**
- Airport limits
 - Runway
 - Taxiways
 - Terminal
 - Apron
 - Acces roads
 - External roads



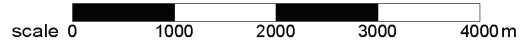
AIR POLLUTANTS DISPERSION CHISINAU Airport

Operational Phase - 2015

VOC - Maximum 24h average concentration



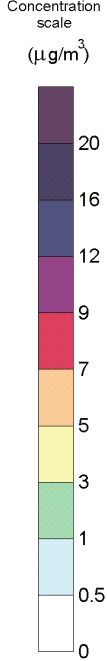
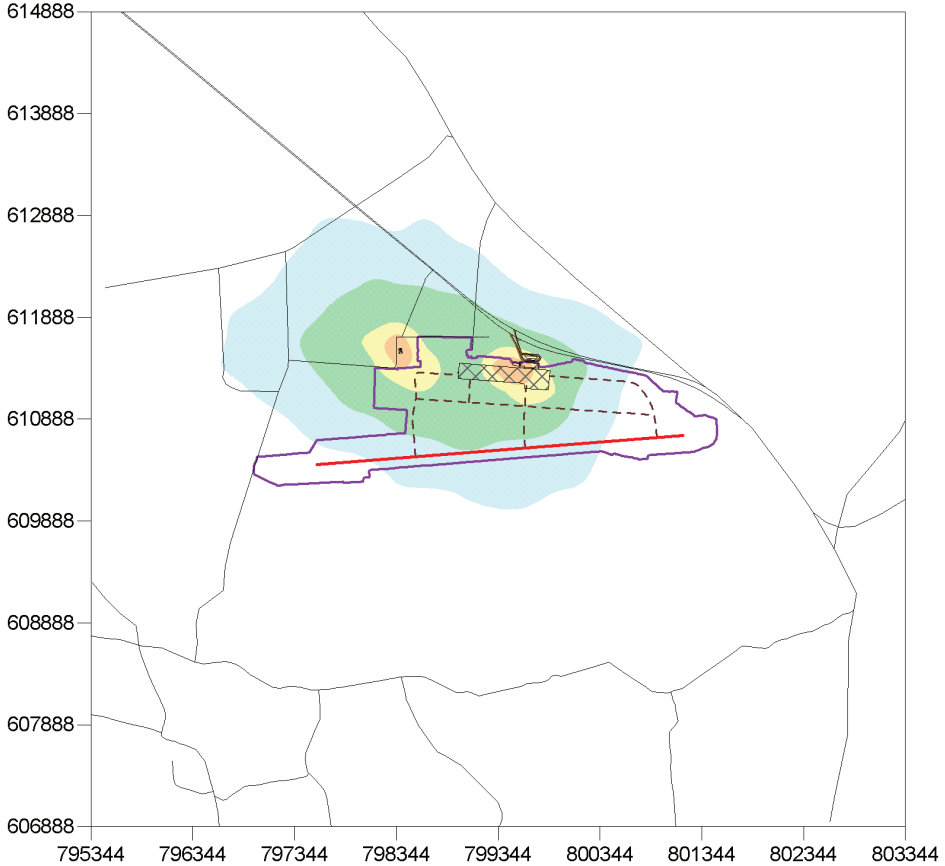
- Legend**
- Airport limits
 - Runway
 - Taxiways
 - Terminal
 - Apron
 - Acces roads
 - External roads



AIR POLLUTANTS DISPERSION CHISINAU Airport

Operational Phase - 2015

VOC - Annual average concentration



Legend

- Airport limits
- Runway
- Taxiways
- Terminal
- Apron
- Acces roads
- External roads

